

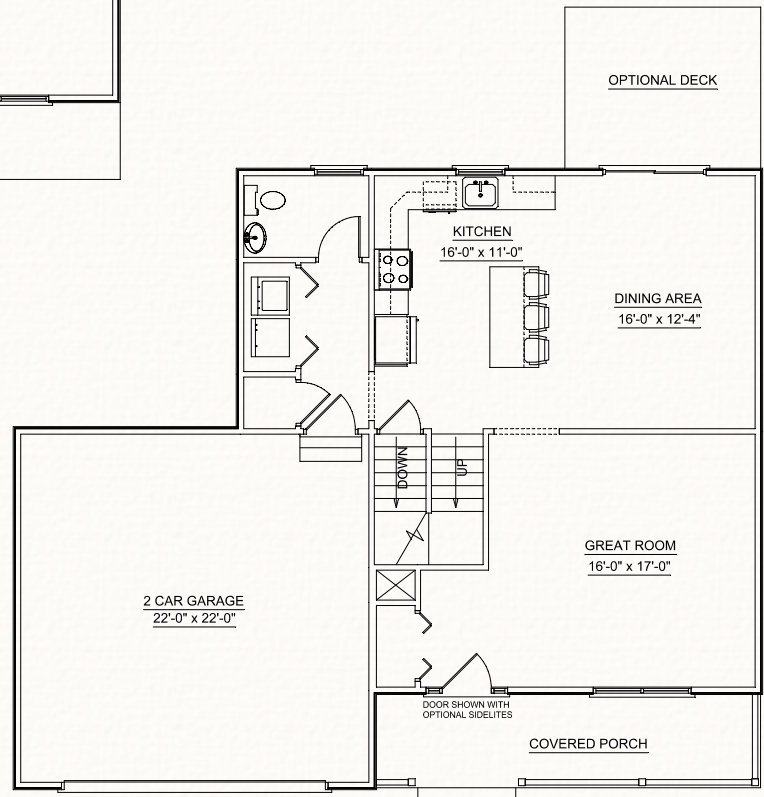
## BARTIS 3 BEDROOM COLONIAL

"Copyright" 2009 Sunwood Development Corp.

FIRST FLOOR: 890 sq. ft.  
 SECOND FLOOR: 816 sq. ft.  
 HOUSE TOTAL: 1,706 sq. ft.

*Built & Marketed by*

**Sunwood**  
**DEVELOPMENT**  
 273 North Colony Street  
 Wallingford, CT 06492  
**203.269.0325**



The rendering and floor plans represent the model depicted. Room dimensions are approximate and may vary according to the field conditions. Builder reserves the right to alter dimensions and may substitute any item specified with a brand of equivalent quality provided the financial and structural integrity of the building is not compromised. The specification sheet supersedes all artistic renderings. All specifications are subject to change and the Builder reserves the right to make modifications or changes without notice or obligation. All building plans may be reversed (mirror image) from what was depicted on the artistic rendering elevations or the site plan map. Optional deck is shown on all models.